

**DOUBLE BAY
MEN'S
BOWLING CLUB**



**DOUBLE BAY
WOMEN'S
BOWLING CLUB**

DOUBLE BAY WATCH

Vol. 14 No 44 – NOVEMBER 12, 2018

Editor: Mike Goffand

BOWLING IN THE RAIN



Umbrellas and lawn bowls at Double Bay last week.

DOUBLE Bay members lost more than a half an afternoon of bowling due to rain last Wednesday, November 7.

More than 80 bowlers, some sharing umbrellas, braved the wet conditions to start play in the Intra-club competition soon after 12 noon, but the light rain gradually increased, compelling club officials to call a halt just before two o'clock, near the usual time for the afternoon refreshment break.

Members adjourned to the clubhouse where the club caterer, June Edelmuth and staff, served an afternoon tea menu of two hot dishes, cakes and tea.

Earlier, club officials were reluctant to cancel the day's

play, as they did due to wet weather on Wednesday, October 19.

They kept a check on the weather map to see the progress of the rain belt moving across the Sydney region and were told by the ground staff that the rain had not unduly affected the playing surface.

However, they received dozens of phone calls from players withdrawing from the day's play, necessitating last minute changes to the day's allocated games.

The interrupted round of the Intra-Club competition will be replayed on Wednesday, weather permitting!

MIXED PAIRS ENTRY DEADLINE EXTENDED

NOMINATIONS for the 2018 Mixed Pairs Championship have been extended until this Wednesday, November 14, the Men's Bowls Committee announced last week.

This follows the smaller than usual number of teams entered when entries closed on the announced date last week.

Organisers said that the event's schedule will be maintained with the semi-finals played on Sunday, December 9 and the final on December 16.

First round games will be played this Sunday, November 18.

Meanwhile, the first Twilight Bowls session will be played on Thursday, providing at least 30 players have entered for the four-week commitment.

| SUMMER | SHIELD | ROUND 4 | |
|-----------------------|-----------------------|-------------------|---------------------------|
| DIVISION 1 (1) | v CARINGBAH | DOUBLE BAY | |
| J KAMPEL | D KING | P GLICK | |
| B FRIDMAN | | | |
| H JANKELOWIZ | P JOEL | | |
| S CAGANOFF | L LILIAN | H BLACK | RESULT |
| 19-16 | 17-20 | 11-19 | LOST 2-6 |
| DIVISION 1 (2) | v EASTLAKES | EASTLAKES | |
| M BECKER | J ENGELMAN | M ROWLEY | |
| A SAIDMAN | | | |
| M SACK | J WINEBERG | | |
| P LEVY | L BREM | A BAKER | RESULT |
| 18-15 | 34-23 | 17-27 | WON 6-2 (69-65) |
| DIVISION 2 (1) | v ASHFIELD | DOUBLE BAY | |
| L SANDLER | I FEDER | B LAZARUS | |
| P FILLER | | | |
| G RAICHMAN | JOHN ROSEN | | |
| R POLLAK | R WEISS | L PLATUS | RESULT |
| 12-22 | 17-23 | 21-23 | LOST 0-8 |
| DIVISION 2 (2) | v TIGER 5 Dock | ASHFIELD | |
| E WAINSTEIN | D KELLAWAY | G GIACOMINI | |
| S ABRAHAMS | | | |
| R NOVIS | P WYNER | | |
| J GLASSER | S FRANKS | J ANGELES | RESULT |
| 18-12 | 29-14 | 16-24 | WON 6-2 (63-50) |
| DIVISION 3 | v COOGEE | DOUBLE BAY | |
| J POPPER | G SILVER | M REISIN | |
| B ROSMARIN | | | |
| L SMITH | J LENNOX | | |
| M HURWITZ | D HOENIG | J FLAXMAN | RESULT |
| 13-24 | 19-24 | 9-29 | LOST 0-8 |

TWO SHIELD WINS

DOUBLE Bay's Summer Shield teams continued to battle for winning results in the Round 4 matches played on Saturday.

Best results came from the Division 1 (2) side which chalked up its second win and from the Division 2 (2) unit which registered its first victory.

Both reversed first round losses.

The Division 1 (2) side came back from Eastlakes with a narrow 6-2 win on the back of a 34-23 triples win by Julian Engelman, John Wineberg and Les Brem, and a narrow decision 18-15 fours win by Michael Becker, Alan Saidman, Mark Sack and Peter Levy..

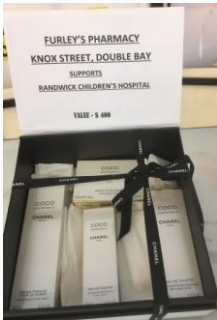
The Division 2 (2) team played Tigers Five Dock at Ashfield to record a 6-2 result David Kellaway's triples combination of Peter Wyner and Stan Franks led the way with a 29-14 result, backed up by the 18-12 score from the foursome of Eric Wainstein, Sam Abrahams, Ray Novis and Jody Glasser.



Cup day aids club's charity

DOUBLE Bay's Women's Club used its 2018 Melbourne Cup Day party to boost its annual donation to the Randwick Hospital Children's Oncology Foundation.

As well as taking part in Cup sweeps, more than 75 members and guests, purchased tickets in a fund-raising raffle which will be drawn during the Women's Club's annual Charity Day, on Thursday, November 22.



One of the main prizes in the raffle is \$400 worth of *Chanel* products (pictured left) donated by Furley's Pharmacy, of Double Bay.

The Cup day's lawn bowling of mixed teams presented an opportunity for members to play with those with whom they had not previously teamed.

Luncheon offered cold meats and smoked salmon to go with salads galore.

Many members contributed to the atmosphere of the Melbourne Cup by wearing fanciful and decorative headwear.

Last year's Charity Day helped Double Bay donate \$3000 to the Children's Oncology Foundation, bringing its overall total contribution to more than \$61,000.



Harry Black, Michael and Lorraine Becker offering raffle tickets.



Luncheon is served

PAM STEIN PHOTOS



Di Englander, Wendy Englander, Hilda Filipovic, Rein Rowlands and Arlene Normand.



Faye Green and Judy Bihari.



Jenny Anderson, Al Rowlands, Natalie Franks and Barbara Shur.

ON THE GREEN *with the Women's Club*

Eight Hands ready for Handicap final



PAM
STEIN
PHOTO

The four pairs of hands which will take part in the 2018 Women's Club's Handicap Pairs final tomorrow (Tuesday). They will pair together in teams of Iris Kampel and Lesley Judelman against Gail Black and Di Engelder.

Iris Kampel aims for second title

IRIS Kampel is the only one of the four 2018 Handicap Pairs finalists who has previously won the event at Double Bay.

It was in 2011 that she skipped the title-winning combination with Ray Novis as her lead.

This year Kampel has Lesley Judelman as her partner and they teamed well last week in a semi-final to overcome the tenacious opposition of Wendy Perkins and Judy Thomas by a single shot at 19-18.

It was all square at 18-all going into the last end when Kampel and Judelman held the determine shot.

At the same time the Gail Black and Di Engelder pairing were too consistent for the duo of Faye Green and newcomer to the club, Kaye Gooch, winning their way into the final by an eight shot margin.

HANDICAP PAIRS RESULTS

SEMI-FINALS

Lesley Judelman (4)
Iris Kampel (1) 19

Judy Thomas (6)
Wendy Perkins (3) 18

Di Engelder (5)
Gail Black (2) 20

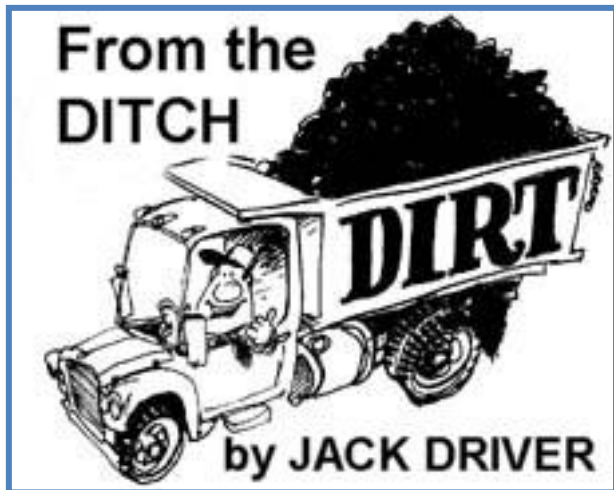
Faye Green (6)
Kaye Gooch (2) 12

DOUBLE BAY WOMEN'S CLUB ANNUAL CHARITY DAY

**BIG PRIZES
TOP BE WON**

THURSDAY, NOVEMBER 22, 9 am

**ALL PROCEEDS TO THE
RANDWICK CHILDREN'S ONCOLOGY FOUNDATION**



A YEAR ago this columnist penned an item detailing the frustration felt by our club officials who have the responsibility of organising the weekly Monday and Wednesday intra-club competitions.

It pointed out that one would expect that all the officials have to do is to follow the team v team draw and allocate the rinks.

That is the basis of the morning's work, but it is only one aspect of ensuring a successful and entertaining afternoon of bowling for the members.

Before the cards can be completed for the day, a check of the overnight and early morning phone message from players who, for some reason or another, have to be scratched from the day's listing.

Then there's the names on the Away Board posted in the men's dressing room, which have to be taken into account when it comes to completing the teams for the day's play.

But it doesn't end there. There is a list of members who have been absent in previous weeks due to health problems and other reasons.

The question is will they be returning to their teams? A phone call is the only way to ascertain the player's availability on the day.

All this is achieved well before nine o'clock so that the day's playing list can be adjusted to accommodate where substitutes are required.

Last Wednesday had the added problem of a wet weather forecast, which dampened the spirit of a number of members who advised by phone that would stay home rather than be bowling at Double Bay.

Problem with that was the phone calls continued throughout the morning delaying the make-up of the teams to the last minute.

And what about those who assumed that the rain would cause the day's play to be cancelled, and didn't bother to advice that they would not be playing?

Perhaps there are too many members who consider the Monday and Wednesday competitions as social games rather than what they are - significant competitions which offer prize money for the most successful.

The make-up of the Men's Club's weekday competitions gives members the opportunity to play with other members of their choice and of similar ability. It also means that everyone has the chance of sharing in the end of season dividends.

If the current situation gets out of hand and the club reverts to the former system of social games organised on the day, just wait for the outcry!



WONDER how many members have noticed the new time piece in the clubhouse?

It is a fashionable Raymond Weil clock donated to the club by Steven Rom, the CEO of the Avstev Group, which is Raymond Weil's Australian distributor.

Club manager, Steve Edelmuth, mentioned the need for a new time piece for the redecorated clubhouse to Rom, when they met in Sydney recently.

Within a few days it arrived with his company Avstev's best wishes.